

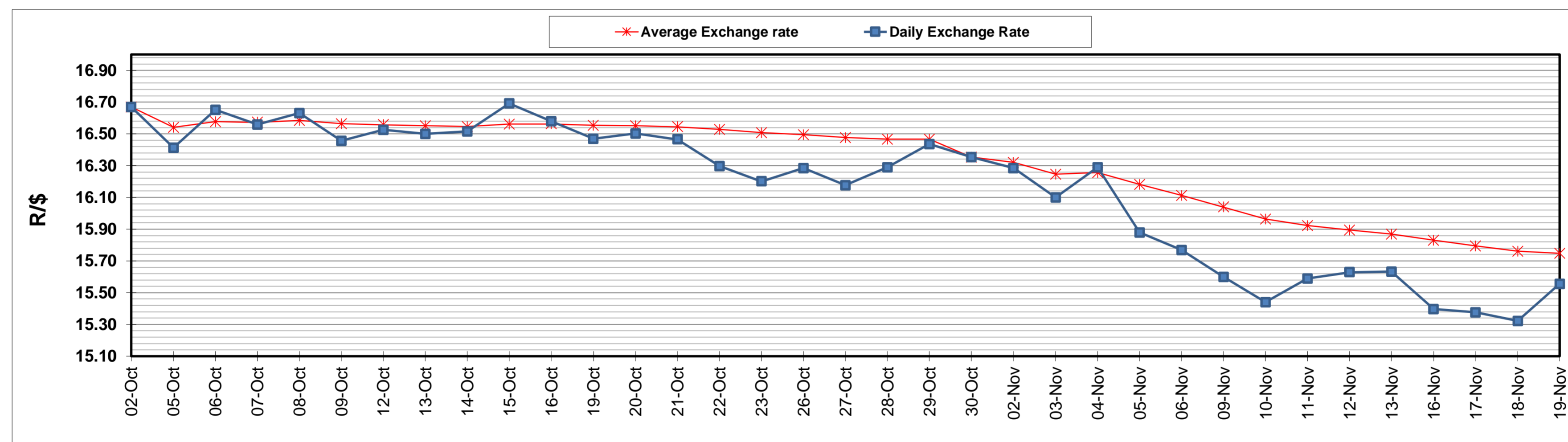
	PETROL 95 ULP	PETROL 93 ULP & LRP	DIESEL 0.05%	DIESEL 0.005%	ILL. PAR.
GAUTENG PUMP PRICE (SA c/l) AS FROM 04/11/2020	1,459.000	1,439.000	-	-	-
WHOLESALE PRICE (SA c/l) AS FROM 04/11/2020	-	-	1,225.560	1,227.960	655.828
SINGLE NATIONAL MAXIMUM RETAIL PRICE	-	-	-	-	818.000
BASIC FUEL PRICE - 19/11/2020 (SA c/l)	480.499	472.706	502.085	503.088	481.773
PRESS RELEASE CONTRIBUTION TO BFP 04/11/2020 - 19/11/2020 (SA c/l)	506.470	496.470	474.630	477.030	451.128
UNIT OVER/(UNDER) RECOVERY - 19/11/2020 (SA c/l)	25.971	23.764	(27.455)	(26.058)	(30.645)
AVERAGE BASIC FUEL PRICE 30/10/2020 - 19/11/2020	478.326	470.167	478.853	481.144	461.301
AVERAGE UNIT OVER/(UNDER) RECOVERY 30/10/2020 - 19/11/2020	33.544	31.703	(1.823)	(1.914)	(13.173)

ANALYSIS MOVEMENT OF AVERAGE OVER/(UNDER) RECOVERY

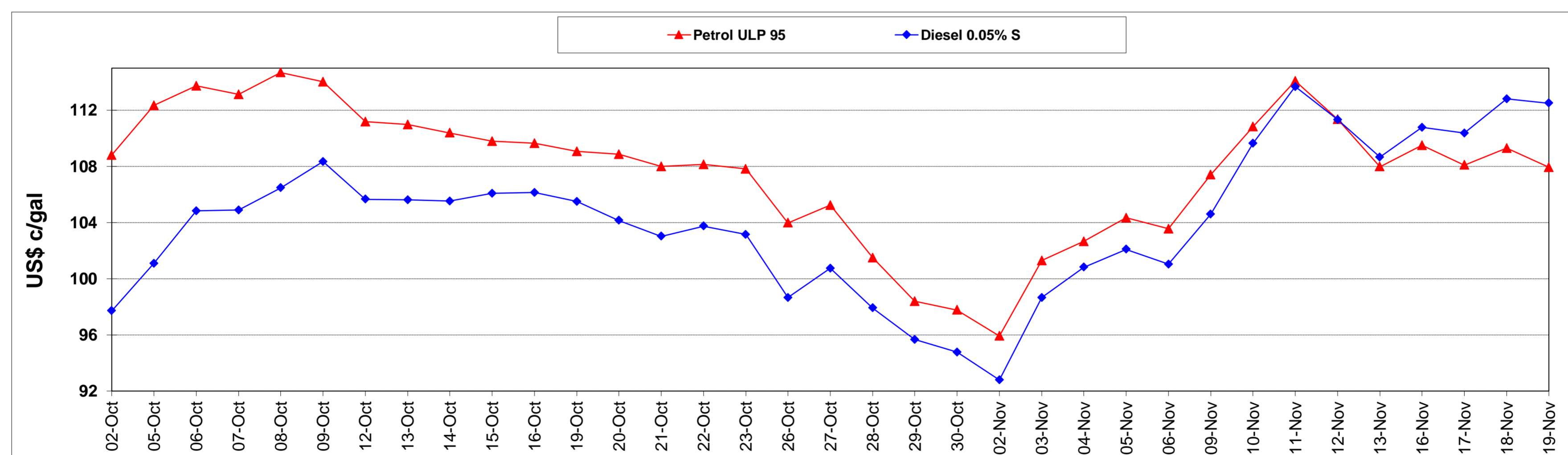
	PETROL 95	PETROL 93	DIESEL 0.05%	DIESEL 0.005%	ILL. PAR.
- MOVEMENT IN INTERNATIONAL PRODUCT PRICES	11.742	10.272	(23.649)	(23.845)	(34.199)
- MOVEMENT IN EXCHANGE RATE	21.802	21.431	21.826	21.931	21.026
AVERAGE UNIT OVER/(UNDER) RECOVERY 30/10/2020 - 19/11/2020	33.544	31.703	(1.823)	(1.914)	(13.173)

R/\$ EXCHANGE RATE - (R/\$15.5550 - 19/11/2020)

EXCHANGE RATE USED IN BASIC FUEL PRICE



INTERNATIONAL PRODUCT PRICES OF BASKET USED IN BASIC FUEL PRICE



BASIC FUEL PRICE IN SA CENTS PER LITRE

